

ECO
FRIENDLY
CARPET TILE



湖
蓝 HULAN

参数		Specifications	
描述	尼龙方块地毯	Description	Nylon Carpet Tile
结构	圈绒	Construction	Tufted Level Loop
毯面纤维	100%原液尼龙	Face Fiber	100% Nylon BCF Solution-dyed
绒高	4.0±0.5mm	Pile height	4.0±0.5mm
针距	1/12"	Gauge	1/12"
基层底布	无纺布	Primary Backing Cloth	Non-woven Polyester Spunbonded
底背	FPE TPE EPU	Backing	FPE TPE EPU with Glass Fiber
尺寸	50x50cm	Size	50x50cm

检测	Testing		
CRI绿色标签	CRI Green Label Plus		GLP1879
日晒色牢度	Colorfastness to Light	AATCC 16-03	Rating 5.0
水浸色牢度	Colorfastness to Water	AATCC 107-02	Rating 5.0
皂洗色牢度	Colorfastness to Cleaning	AATCC 138-00	Rating 5.0
摩擦色牢度	Colorfastness to Crocking	AATCC 165-99	Rating 5.0
防污性	Stain Resistance	AATCC 175-03	Rating 10
烟雾密度(燃烧)	Smoke density (flaming)	ASTM E 662	102
烟雾密度(非燃烧)	Smoke density (non-flaming)	ASTM E 662	424
表面易燃性	Surface Flammability	ASTM D 2859	DOC FF 1-70
辐射通量	Radiant Flux	ASTM E 648	Class I
绒头牢度	Tuft bind	ASTM D 1335	10.6Lbs
尺寸稳定性	AACHEN dimensional stability	ASTM D 7570	MT4: 0.091% CT4:0.008%
抗静电性	Electrostatic propensity	AATCC 134	0.5kv
快速脏污试验	Accelerated soiling	ASTM D 6540	Rating 5.0

INSTALLATION METHODS



QuarterTurn



Ashlar



Monolithic



Brick



NO SMELL
无味
Odorless



STABILITY
稳定
Stability

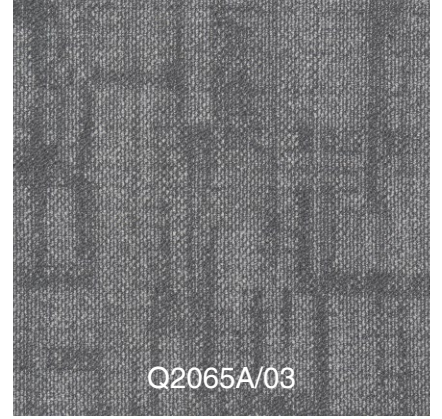
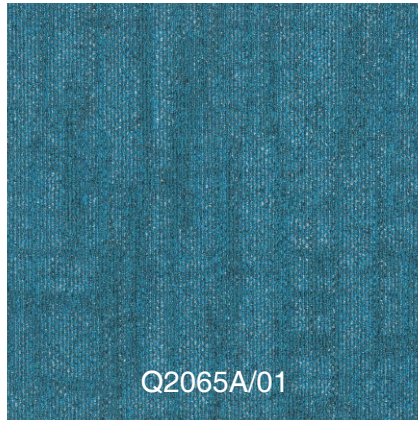
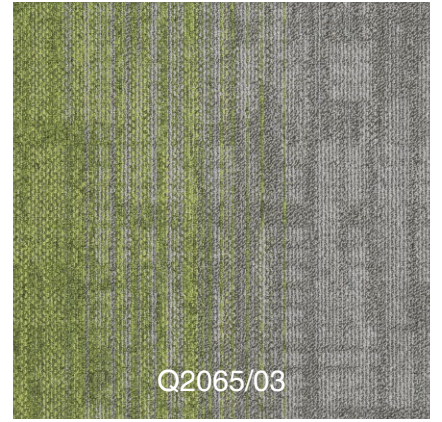
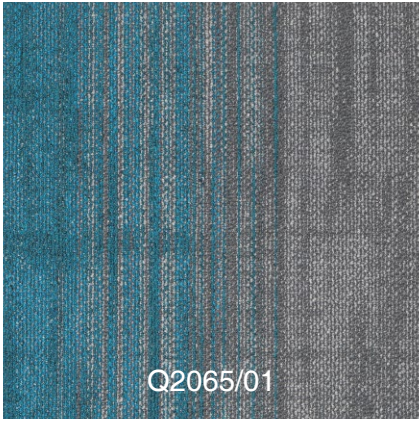


ELASTICITY
弹性
Resiliency



WEAR RESISTANCE
耐用
Durable







Q2065A/01+03+Q2065/01

湖蓝
HULAN



HAIMA CARPET
海身地毯
Since 1958



Q2065A/04+06+Q2065/04

湖蓝
HULAN



HAIMA CARPET
海马地毯
Since 1958



Q2065A/02+03+Q2065/02

湖蓝
HULAN



HAIMA CARPET
海身地毯
Since 1958



Q2065A/04+05+Q2065/03

湖蓝
HULAN



HAIMA CARPET
海身地毯
Since 1958



Q2065A/04+Q2065/04+Q2065A/06

湖蓝
HULAN

 HAIMA CARPET
海身地毯
Since 1958



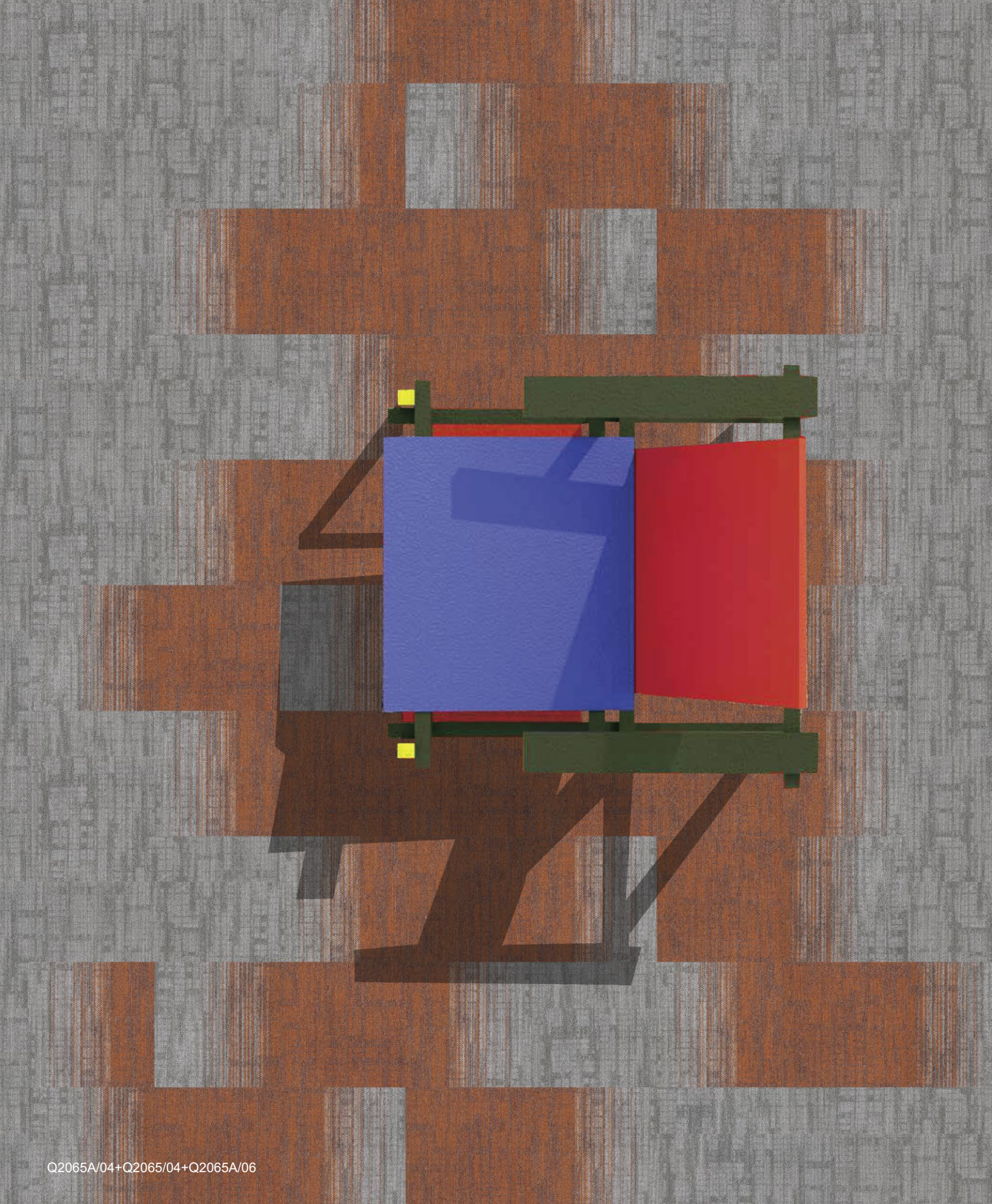
Q2065A/04+Q2065/03+Q2065A/05

湖蓝
HULAN



HAIMA CARPET
海身地毯

Since 1958



Q2065A/04+Q2065/04+Q2065A/06

湖蓝
HULAN



HAIMA CARPET
海马地毯
Since 1958



目录/CONTENTS

- 01 策划背景
backgroud
- 02 项目策划
planning
- 03 宣传策略
strategy
- 04 费用预算
Cost budget

Q2065A/04+Q2065/03+Q2065A/05

湖蓝
HULAN



HAIMA CARPET
海身地毯
Since 1958



Q2065A/01+Q2065/01+Q2065A/03

湖蓝
HULAN



HAIMA CARPET
海身地毯
Since 1958



Q2065A/04+Q2065/03+Q2065A/05

湖蓝
HULAN



HAIMA CARPET
海身地毯
Since 1958



Q2065A/01+Q2065/01+Q2065A/03

湖蓝
HULAN



HAIMA CARPET
海身地毯



Q2065A/02+Q2065/02+Q2065A/03

湖蓝
HULAN



HAIMA CARPET
海马地毯
Since 1958



Q2065A/02+Q2065/02+Q2065A/03

湖蓝
HULAN



HAIMA CARPET
海身地毯
Since 1958